

FROM THE 'ENERGY, ECONOMY, CLIMATE & YOU!' POSTER

TRANSPORTATION

Is your family traveling differently during COVID?
How much do you spend on transportation?
What can we learn from that for the future?

Learn more,
make a plan
& take action:
[NHEEP.ORG/
POSTER-2020-21](http://NHEEP.ORG/POSTER-2020-21)



150
MMBTU/year,
per family*

27,000
lbs CO2e/year,
per family*

\$2,500/year,
per family†



OUR MISSION
is to build a deep understanding of energy through education, encouraging choices that result in sustainability in our communities, economy and environment.

more resources at

NHEEP.ORG

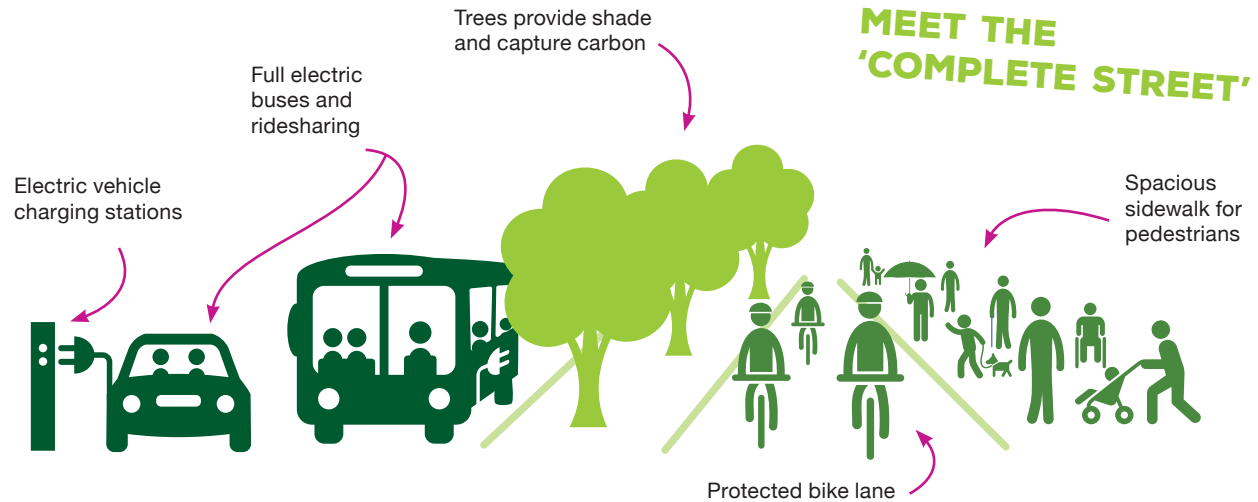
info@nheep.org

802-552-8674

Montpelier, VT

Produced by NHEEP, 2020.
For footnotes and more detail, go to nheep.org/poster-2020-21.

† An average family in NH travels approximately 25,500 miles per year in personal vehicles.



	5,000 miles/year	10,000 miles/year	15,000 miles/year	20,000 miles/year
BIKE OR WALK	Energy: 0 MMBTU/year Cost: \$0/yr (no fuel used) Emissions: 0 lbs CO2e/yr	Energy: 0 MMBTU/year Cost: \$0/yr (no fuel used) Emissions: 0 lbs CO2e/yr	Energy: 0 MMBTU/year Cost: \$0/yr (no fuel used) Emissions: 0 lbs CO2e/yr	Energy: 0 MMBTU/year Cost: \$0/yr (no fuel used) Emissions: 0 lbs CO2e/yr
ELECTRIC CAR	Energy: 6.6 MMBTU/year Cost for electricity: \$310/yr Emissions: 2,000 lbs CO2e/yr	Energy: 13 MMBTU/year Cost for electricity: \$610/yr Emissions: 3,900 lbs CO2e/yr	Energy: 20 MMBTU/year Cost for electricity: \$920/yr Emissions: 5,900 lbs CO2e/yr	Energy: 26 MMBTU/year Cost for electricity: \$1,230/yr Emissions: 7,900 lbs CO2e/yr
SCHOOL BUS*	Energy: 7.0 MMBTU/year Cost: \$0/yr (no cost to family) Emissions: 1,300 lbs CO2e/yr	Energy: 14 MMBTU/year Cost: \$0/yr (no cost to family) Emissions: 2,600 lbs CO2e/yr	Energy: 21 MMBTU/year Cost: \$0/yr (no cost to family) Emissions: 3,900 lbs CO2e/yr	Energy: 28 MMBTU/year Cost: \$0/yr (no cost to family) Emissions: 5,300 lbs CO2e/yr
EFFICIENT CAR	Energy: 21 MMBTU/year Cost for fuel: \$370/yr Emissions: 4,000 lbs CO2e/yr	Energy: 43 MMBTU/year Cost for fuel: \$730/yr Emissions: 8,000 lbs CO2e/yr	Energy: 64 MMBTU/year Cost for fuel: \$1,100/yr Emissions: 12,000 lbs CO2e/yr	Energy: 86 MMBTU/year Cost for fuel: \$1,470/yr Emissions: 16,000 lbs CO2e/yr
PICKUP TRUCK	Energy: 36 MMBTU/year Cost for fuel: \$620/yr Emissions: 7,000 lbs CO2e/yr	Energy: 73 MMBTU/year Cost for fuel: \$1,250/yr Emissions: 14,000 lbs CO2e/yr	Energy: 109 MMBTU/year Cost for fuel: \$1,900/yr Emissions: 20,000 lbs CO2e/yr	Energy: 146 MMBTU/year Cost for fuel: \$2,500/yr Emissions: 27,000 lbs CO2e/yr

* The numbers for the school bus are based on the assumption that the bus is ¾ full and 2 children from each household are riding. It assumes that the family does not have to pay to use the school bus (even though it does cost the community to run a bus).